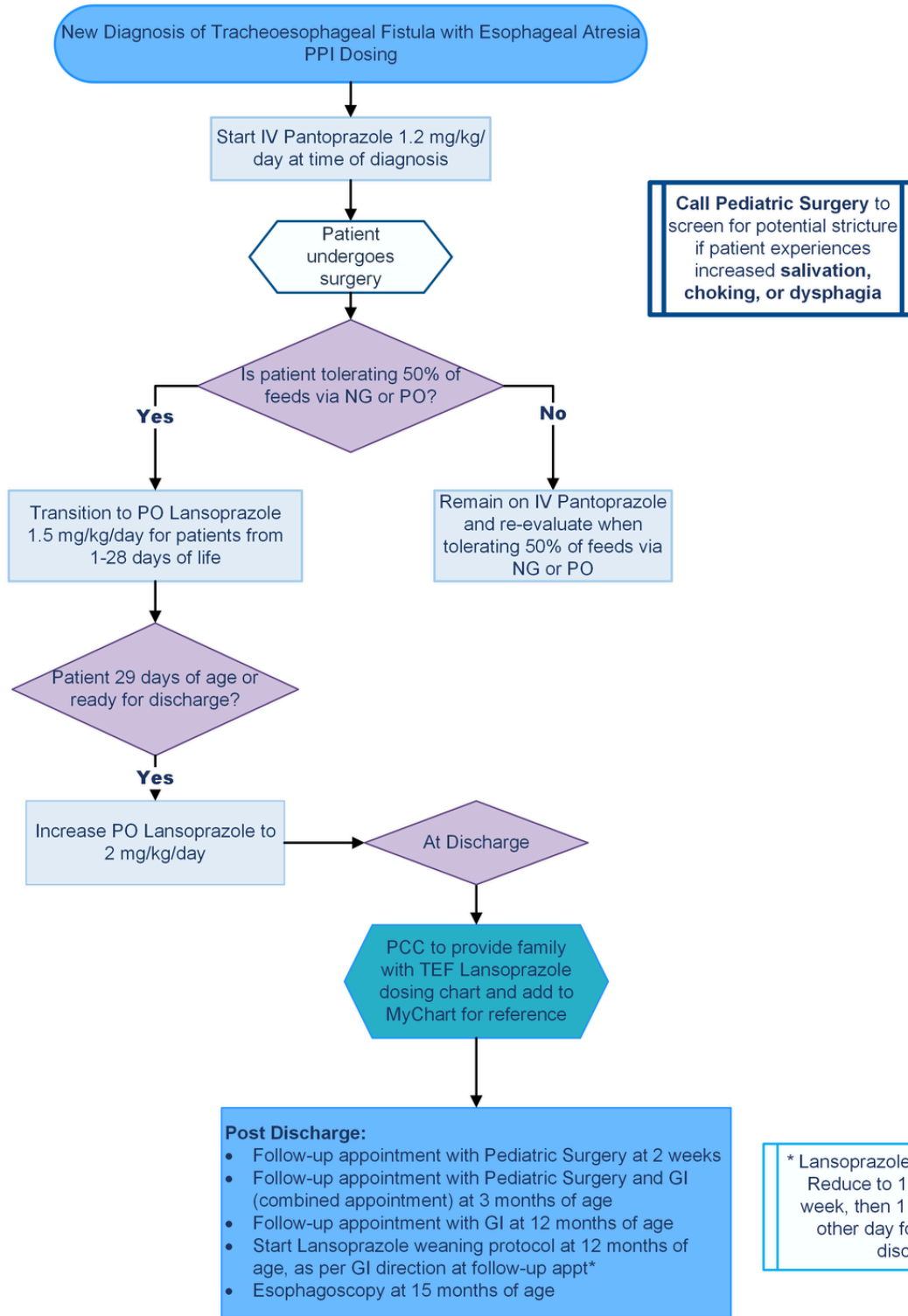


Notes
1 Aspiration should not be diagnosed on esophagram
2 Not tolerating (post quality scores) will continue with feeding therapist
Post Quality Scoring: 3 – Difficulty with coordination, needs pacing 4 – Weak/inconsistent suck, disinterested, gagging 5 – Unable to coordinate s/s/b, choking, coughing, desaturations, RR above 80
3 VFSS should be done with agreement of pediatric surgery, NICU, and feeding therapy teams
4 NG should not be placed before 2-weeks post surgery. NG should be placed with fluoroscopic guidance



Discharge Planning and PPI Dosing for NICU Patients with a Diagnosis of Tracheoesophageal Fistula



DISCLAIMER: This document is intended solely as a resource to assist physicians and APPs in providing quality patient care. It does not establish a community standard of health care practice, nor is it intended to replace clinical judgment or the individualized assessment of each patient's unique circumstances. The recommendations contained herein are based on the best available evidence at the time of publication, but may not be appropriate in all situations.