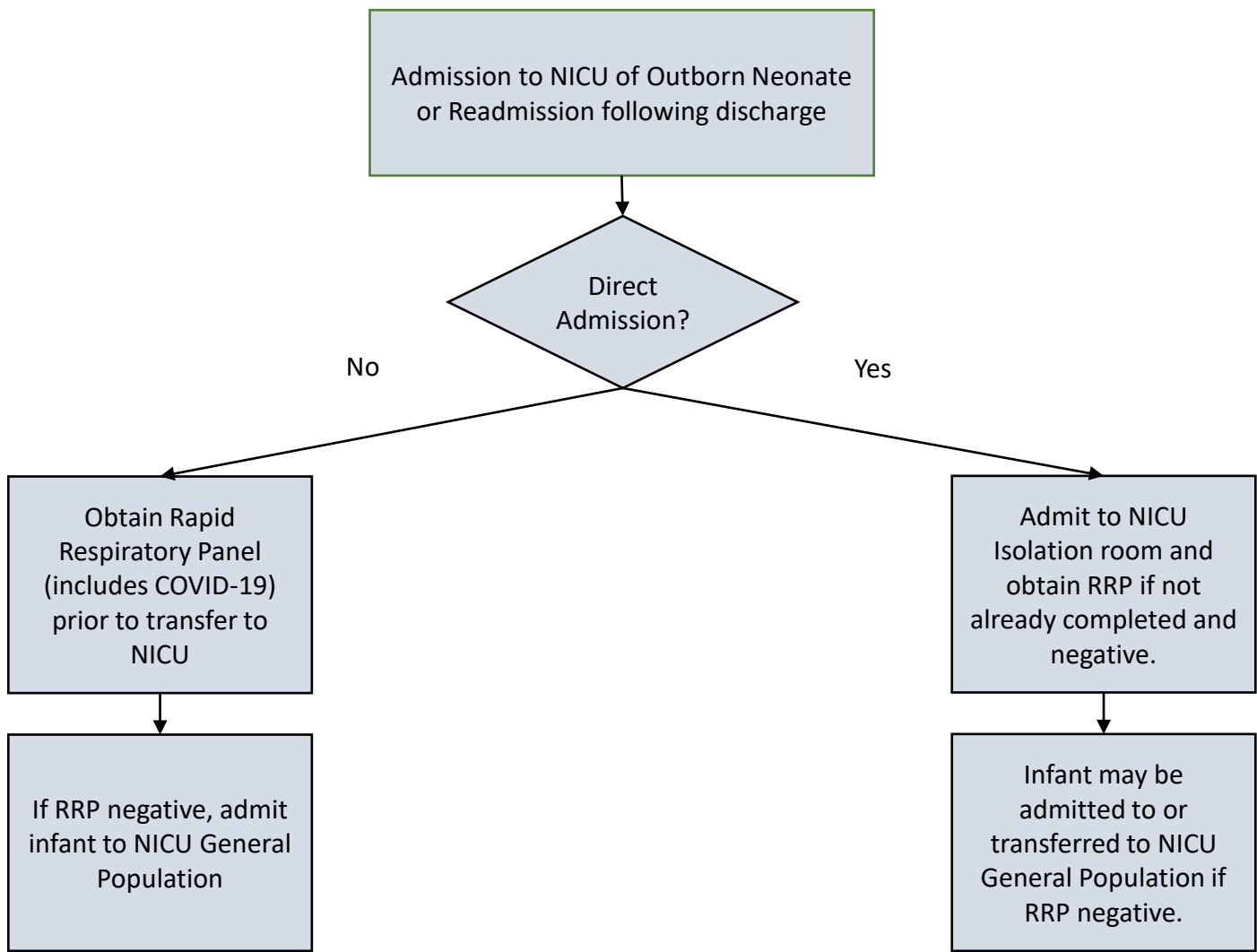


COVID Testing of Mom for NICU Admit ≤ 72 Hours of Age

v. 2.9.23



Instructions for Visitation following ED or Direct Admits

- Asymptomatic parents and visitors may visit per NICU and [St. Luke's Visitor Policy](#)
- Symptomatic parents and visitors, or those with known close exposure to COVID-19 should follow [NICU Visitation, Isolation, Testing, DC Procedure](#) document