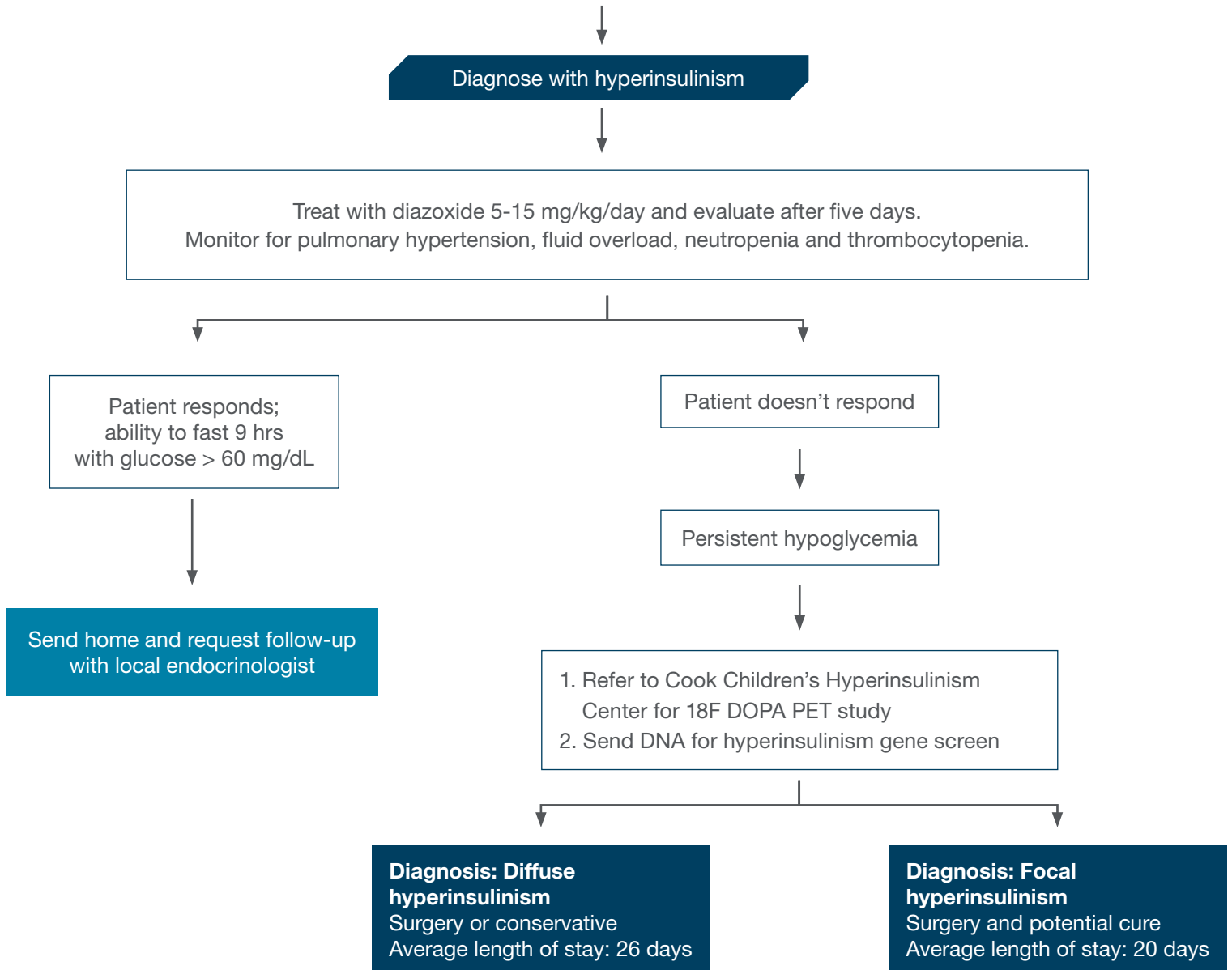


# Hypoglycemia < 50 mg/dL is confirmed

Treat with oral feeds and/or IV glucose to keep glucose > 70 mg/dL

Treat with oral feeds and/or IV glucose to keep glucose > 70 mg/dL. Wean off IV if possible. If glucose < 50 mg/dL after 48-72 hours of life, determine etiology of hypoglycemia (measure plasma glucose, insulin, lactate, betahydroxybutyrate, growth hormone and cortisol levels and perform glucagon stimulation test).



682-885-1940

To better serve our treating clinicians, we can assist you with:

- Non-emergent transfer requests
- Direct admissions
- Specialist consultations



Cook Children's Hyperinsulinism Center  
1500 Cooper Street, 2nd floor  
Fort Worth, TX 76104  
paul.thornton@cookchildrens.org  
682-885-4000